

Instituto Tecnológico de Salina Cruz

Fundamentos de Redes

Semestre Enero – Julio 2015

Reporte de Práctica

Práctica nº 3

Unidad 3

Nombre: MARCOS ANTONIO GARCIA IBAÑEZ

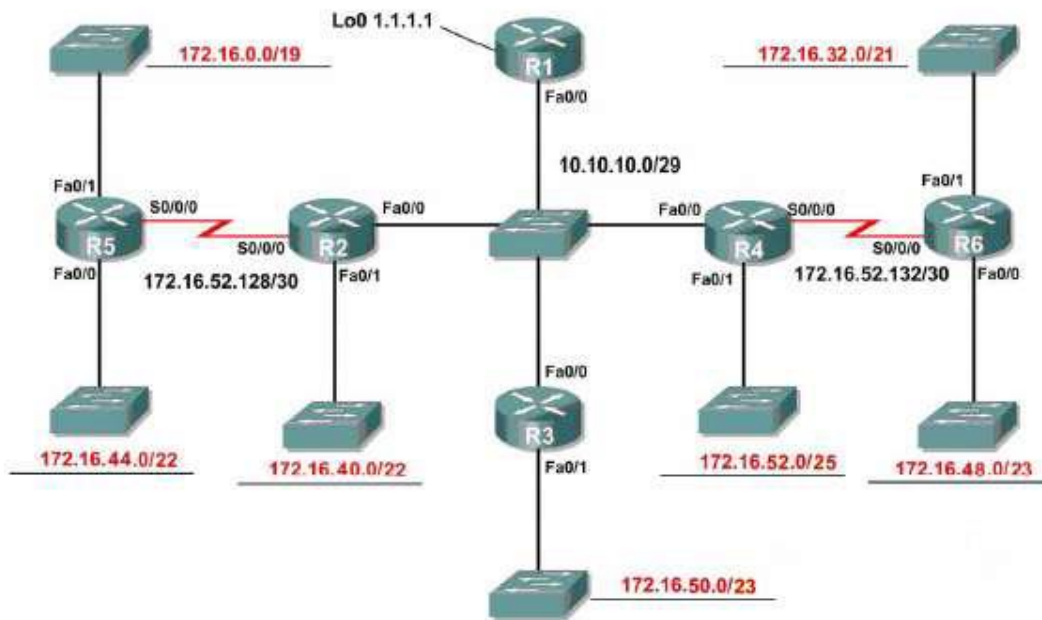
Fecha: 16 de Abril del 2015

Objetivo: Conocer los comandos básicos de un router Cisco y configurar rutas estáticas para los mismos

Instrucciones:

Realice, La tabla de direccionamiento, la configuración inicial Y verifique las conexiones entre las PC´s. Agregar al menos 5 pcs por subred

Diagrama de topología



DISPOSITIVO	INTERFAZ	DIRECCION IP	MASCARA
ROUTER RED3	Fa0/0	10.10.10.1	255.0.0.0
ROUTER RED 2	Fa0/0	10.10.10.2	255.0.0.0
	Fa1/0	172.16.40.1	255.255.255.0
	S2/0	172.16.52.130	255.255.255.0
ROUTER RED4	Fa0/0	10.10.10.3	255.0.0.0
	Fa1/0	172.16.50.1	255.255.255.0
ROUTER RED5	Fa0/0	10.10.10.4	255.0.0.0
	Fa1/0	172.16.52.1	255.255.255.0
	S2/0	172.16.143.52	255.255.255.0
ROUTER RED1	Fa0/0	172.16.44.1	255.255.255.0
	Fa1/0	172.16.0.1	255.255.255.0
	S2/0	172.16.52.131	255.255.255.0
ROUTER RED6	Fa0/0	172.16.48.1	255.255.255.0
	Fa1/0	172.16.32.1	255.255.255.0
	S2/0	172.16.52.135	255.255.255.0

COMENZAMOS CON LA CONFIGURACION DE LOS ROUTER, EN PRIMERA INSTANCIA TENEMOS EL LEVANTAMIENTO DE LOS PUERTOS FASTETHERNET Y SERIALES CORRESPONDIENTES EN LA RED.

ROUTER RED 1

```
% Ambiguous command: "I"
RED7(config)#interface fa0/0
RED7(config-if)#ip address 172.16.44.1 255.255.255.0
RED7(config-if)#no shutdown

RED7(config-if)#
%LINK-5-CHANGED: Interface FastEthernet0/0, changed state to up

%LINEPROTO-5-UPDOWN: Line protocol on Interface FastEthernet0/0, changed state to up

RED7(config-if)#interface fa1/0
RED7(config-if)#ip address 172.16.0.1 255.255.255.0
RED7(config-if)#no shutdown

RED7(config-if)#
%LINK-5-CHANGED: Interface FastEthernet1/0, changed state to up
```

Copy Paste

ROUTER RED 2

```
RED2(config)#interface fa0/0
RED2(config-if)#ip address 10.10.10.2 255.0.0.0
RED2(config-if)#no shutdown

RED2(config-if)#
%LINK-5-CHANGED: Interface FastEthernet0/0, changed state to up

%LINEPROTO-5-UPDOWN: Line protocol on Interface FastEthernet0/0, changed state to up

RED2(config-if)#interface fa1/0
RED2(config-if)#ip address 172.16.40.1 255.255.255.0
RED2(config-if)#no shutdown

RED2(config-if)#
%LINK-5-CHANGED: Interface FastEthernet1/0, changed state to up

%LINEPROTO-5-UPDOWN: Line protocol on Interface FastEthernet1/0, changed state to up
```

Copy Paste

ROUTER RED 4

```
RED4(config)#interface fa0/0
RED4(config-if)#ip address 10.10.10.3 255.0.0.0
RED4(config-if)#no shutdown

RED4(config-if)#
%LINK-5-CHANGED: Interface FastEthernet0/0, changed state to up
%LINEPROTO-5-UPDOWN: Line protocol on Interface FastEthernet0/0, changed state to up

RED4(config-if)#interface fa1/0
RED4(config-if)#ip address 172.16.50.1 255.255.255.0
RED4(config-if)#no shutdown

RED4(config-if)#
%LINK-5-CHANGED: Interface FastEthernet1/0, changed state to up
%LINEPROTO-5-UPDOWN: Line protocol on Interface FastEthernet1/0, changed state to up
```

Copy Paste

ROUTER RED 5

```
RED5(config)#interface fa0/0
RED5(config-if)#ip address 10.10.10.4 255.0.0.0
RED5(config-if)#no shutdown

RED5(config-if)#
%LINK-5-CHANGED: Interface FastEthernet0/0, changed state to up
%LINEPROTO-5-UPDOWN: Line protocol on Interface FastEthernet0/0, changed state to up

RED5(config-if)#interface fa1/0
RED5(config-if)#ip address 172.16.52.1 255.255.255.0
RED5(config-if)#no shutdown

RED5(config-if)#
%LINK-5-CHANGED: Interface FastEthernet1/0, changed state to up
%LINEPROTO-5-UPDOWN: Line protocol on Interface FastEthernet1/0, changed state to up
```

Copy Paste

```
RED5(config-if)#interface s2/0
RED5(config-if)#ip address 172.16.52.134 255.255.255.0
% 172.16.52.0 overlaps with FastEthernet1/0
RED5(config-if)#ip address 172.16.134.52 255.255.255.0
RED5(config-if)#no shutdown

%LINK-S-CHANGED: Interface Serial2/0, changed state to down
RED5(config-if)#
```

Copy

Paste

ROUTER RED 6

```
RED6(config)#interface fa0/0
RED6(config-if)#ip address 172.16.48.1 255.255.255.0
RED6(config-if)#no shutdown

RED6(config-if)#
%LINK-S-CHANGED: Interface FastEthernet0/0, changed state to up
%LINEPROTO-S-UPDOWN: Line protocol on Interface FastEthernet0/0, changed state to up

RED6(config-if)#interface fa1/0
RED6(config-if)#ip address 172.16.32.1 255.255.255.0
RED6(config-if)#no shutdown

RED6(config-if)#
%LINK-S-CHANGED: Interface FastEthernet1/0, changed state to up
%LINEPROTO-S-UPDOWN: Line protocol on Interface FastEthernet1/0, changed state to up
```

Copy

Paste

```
RED6(config-if)#interface s2/0
RED6(config-if)#ip address 172.16.52.135 255.255.255.0
RED6(config-if)#no shutdown

RED6(config-if)#
%LINK-S-CHANGED: Interface Serial2/0, changed state to up

%LINEPROTO-S-UPDOWN: Line protocol on Interface Serial2/0, changed state to up
```

Copy

Paste